

Transponder Card (10G OTU/OEO 8xSFP+/SFP) FW610G3R

The 10G OTU/OEO Transponder Card is a business access module developed by FIBERWDM for fiber optic links. It is designed to enable 3R signal regeneration for business protocols with arbitrary speeds ranging from 1.25Gbit/s to 11.3Gbit/s. It can also convert the signals into CWDM or DWDM standard wavelength optical signals, enabling wavelength-division multiplexing transmission when used in conjunction with CWDM or DWDM multiplexers/demultiplexers. It is suitable for optical communication systems such as PDH/SDH/POS/SONET/SAN/ETHERNET. This module provides a high-quality solution for addressing the scarcity of fiber resources and high fiber line loss in transmission lines.

Product Introduction:

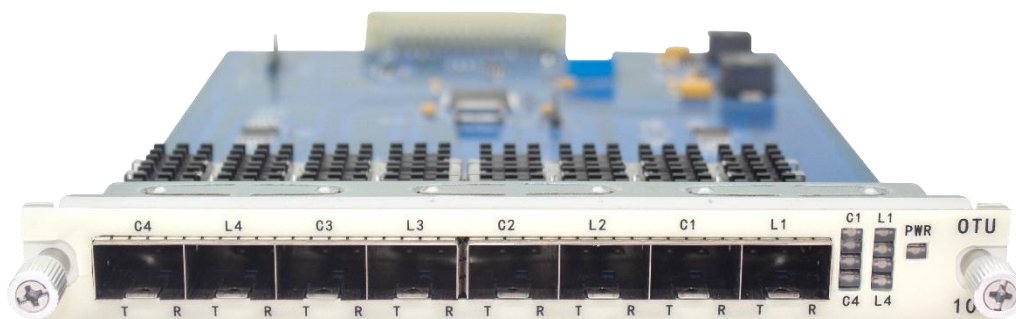


Figure 1: 10G OTU/OEO board

Product Features

- ◆ Supports CWDM or DWDM transmission and wavelength conversion.
- ◆ Supports multiple transmission distances: Without relay, it supports a maximum transmission distance of 120KM@1.25G, 100km@10G
- ◆ Supports 4-channel bi-directional or 8-channel uni-directional access for business

protocols with arbitrary speeds ranging from 1.25Gbit/s to 11.3Gbit/s. Supports both single-mode and multi-mode client interfaces.

- ◆ Supports SNMP-based unified network management platform. Provides CLI, Web, and NetView (graphical interface) for network management.
- ◆ Supports CDR function for optimizing output signals, DDM signal monitoring, and optical signal shutdown.
- ◆ Supports software-based port shutdown feature.

Product Specifications

System Parameters		Technical Specifications
Maximum Board Capacity		4x10G bi-directional transmission 8x10G uni-directional transmission
Wavelength Range		CWDM: 1271~1611nm DWDM: C-Band (100GHZ or 50GHZ)
Supported Business Access Types		PDH、SDH: STM-16/STM-64 、Ethernet、 SONET: OC-48/OC-192 FE、GE、10GE、1G、2G、4G、8G、10G、CPRI 1~7、 POS FICON、ESCON
3R Technology		3R Functions: Re-amplifying, Retiming, Re-shaping
Network Management Functions		CDR Function (Real-time DDM Monitoring) Adaptive Settings for Different Speeds Business Uni/Bi-directional Settings
Network Management		Web、NetView
Dimensions		156 (W) × 20 (H) × 225 (D) (mm)
Environmental Requirements	Operating Temperature	-10°C ~ 70°C

	Storage Temperature	-40°C ~ 80°C
	Relative Humidity	5% ~ 95% (non-condensing)
Safety and EMC Compliance		Complies with FCC, UL, CE, TUV, CSA standards
Power Consumption		<18W

Ordering Information

Part No.	Specifications
FW610G3R	4*10Gbit/s Transponder(OEO) Card,Support 1.25G~10G, 3R,8*SFP+, used in FW6600 series take one slot